


#	PART NO. (P/N)	QTY	DESCRIPTION	OPTIONAL ITEM	#	PART NO. (P/N)	QTY	DESCRIPTION	OPTIONAL ITEM
Over Center Link continued (for both sides)					CENTER WING SECTION HYDRAULICS				
<i>(not included with kit)</i>					<i>(not included with kit)</i>				
2)	4709-02	8	Shim 0.063"		1)	AN3-13A	6	Bolt, Undrilled	
3)	4712-407	2	Hydraulic Cylinder (Main Gear)		2)	AN3-10A	6	Bolt, Undrilled	
4)	4718	1	Left Over Center Link		3)	MS219-DG4	6	Clamp	
5)	4720	1	Right Over Center Link		4)	MS219-DG7	6	Clamp	
6)	4721	4	Over Center Link Arms		5)	AN804-4D	2	Fittings, Tee	
7)	4722	4	Bushing		6)	AN818-4D	38	Fittings, Nut	
8)	4723	2	Spacer		7)	AN819-4D	38	Fittings, Sleeve	
9)	4763	2	Main Gear Up Stop		8)	AN822-4D	6	Fittings, Elbow	
10)	JM-1	2	Actuator Arm for Micro Switch		9)	AN825-4D	2	Fittings, Tee	
11)	F45-19	2	Bearings, Rod End		10)	AN827-4D	2	Fitting, Cross	
12)	AN3-16A	4	Bolt, Undrilled		11)	AN832-4D	6	Fittings, Union	
13)	AN4-44A	2	Bolt, Undrilled		12)	AN833-4D	6	Fittings, Elbow	
14)	AN4-12A	2	Bolt, Undrilled		13)	AN837-4D	7	Fittings, Elbow	
15)	AN4-7A	2	Bolt, Undrilled		14)	AN924-4D	15	Fittings, Nut	
16)	AN5-41A	2	Bolt, Undrilled		15)	BG03-4NJ	20	Hose Fittings	
17)	AN5-20A	4	Bolt, Undrilled		16)	R703	130 in.	Flexible Hydraulic Line	
18)	110-0036 6381K103	4	Bushing		17)	AN365-1032A	12	Nut, Nylock	
19)	AN5-7	2	Bolt, Drilled		18)	PH-250	1	(1/4" x 3.5" x 1.5") Phenolic Block	
20)	MS24665-140	4	Cotter Pin		19)	PH-250	2	(1/4" x 3" x 3") Phenolic Block	
21)	198-0004 9416K77	2	Clip, Safety		20)	5052	240 in.	1/4" Tubing, Aluminum	
22)	198-0003 9416K71	2	End Fitting, Metal Ball Socket		21)	AN960-10	12	Washer, Flat	
23)	198-0005 9416K84	2	End Fitting, Metal Eyelet		<b>LANDING/TAXI LIGHTS</b>				
24)	AN816-4D	4	Fittings, Nipple		1)	4228	1	Landing/Taxi Light Mount	**Yes
25)	160-0004 9416K24	2	Gas Strut		2)	4531	1	Landing/Taxi Light Lens	**Yes
26)	1XE1-T	2	Main Gear Micro-switch		3)	4532	1	Gasket	**Yes
27)	AN310-5	2	Nut, Castle		4)	MS35649-262	6	Nut, Check	**Yes
28)	AN316-5	2	Nut, Check		5)	MS24694-S52	8	Screw, Machine	**Yes
29)	AN365-524A	6	Nut, Nylock		6)	101-0127 91772A157	6	Screw, Machine	
30)	AN365-428A	6	Nut, Nylock		7)	MS21069-06	6	Nut Plate	
31)	AN365-1032A	4	Nut, Nylock		8)	K1000-08	8	Nut Plate	
32)	HC-05-A 4786	2	Sequence Valve		9)	01-0770346-02	1	Landing Light	**Yes
33)	198-0006 9512K73	2	Stud, Ball		10)	01-0770346-04	1	Taxi Light	**Yes
34)	AN960-516	16	Washer, Flat		11)	3614	6	Spring	**Yes
35)	AN960-416	12	Washer, Flat		12)	AN960-6	6	Washer	**Yes
36)	AN960-10	8	Washer, Flat		13)	800-0001	1 (pair)	Main gear landing lights (12 volt)	
37)	110-0002B	4	Bearing, Thrust, over-center link		14)	800-0002	1 (pair)	Main gear landing lights (24 volt)	
38)	112-0034	4	Bushing for new actuator w/bearing & old over-center link w/AN5 bolt hole		<b>SPEED BRAKES</b>				
	or 112-0050	4	Bushing for new actuator w/bearing & new over-center link w/AN3 bolt hole		1)	4530	2	Cover Plates (only used when	**Yes
<b>MAIN GEAR WHEELS &amp; TIRES</b>					2)	4934-12	2	Precise Flight Speed Brakes, 12 Volt	**Yes
1)	AN4-22A	6	Bolt, Undrilled		3)	4934-24	2	Precise Flight Speed Brakes, 24 Volt	**Yes
2)	TU-5.00-5	2	Inner Tube 5"		4)	MS24694-S5	28	Screws, Machine (Structural)	
3)	40-151	2	Main Wheel Assembly		 <div style="display: flex; justify-content: space-between; align-items: center;"> <div style="border: 1px solid black; padding: 2px;">3-3</div> <div style="border: 1px solid black; padding: 2px;">Chapter 3</div> <div style="border: 1px solid black; padding: 2px;">REV. 7/09-05-08</div> </div> <div style="border: 1px solid black; padding: 2px; text-align: center; width: 100%;">WING SYSTEMS</div>				
5)	AN365-416A	6	Nut, Nylock						
6)	TR-GY 5.00-5	2	Tire, Main Gear						
7)	AN960-416L	12	Washers, Flat						



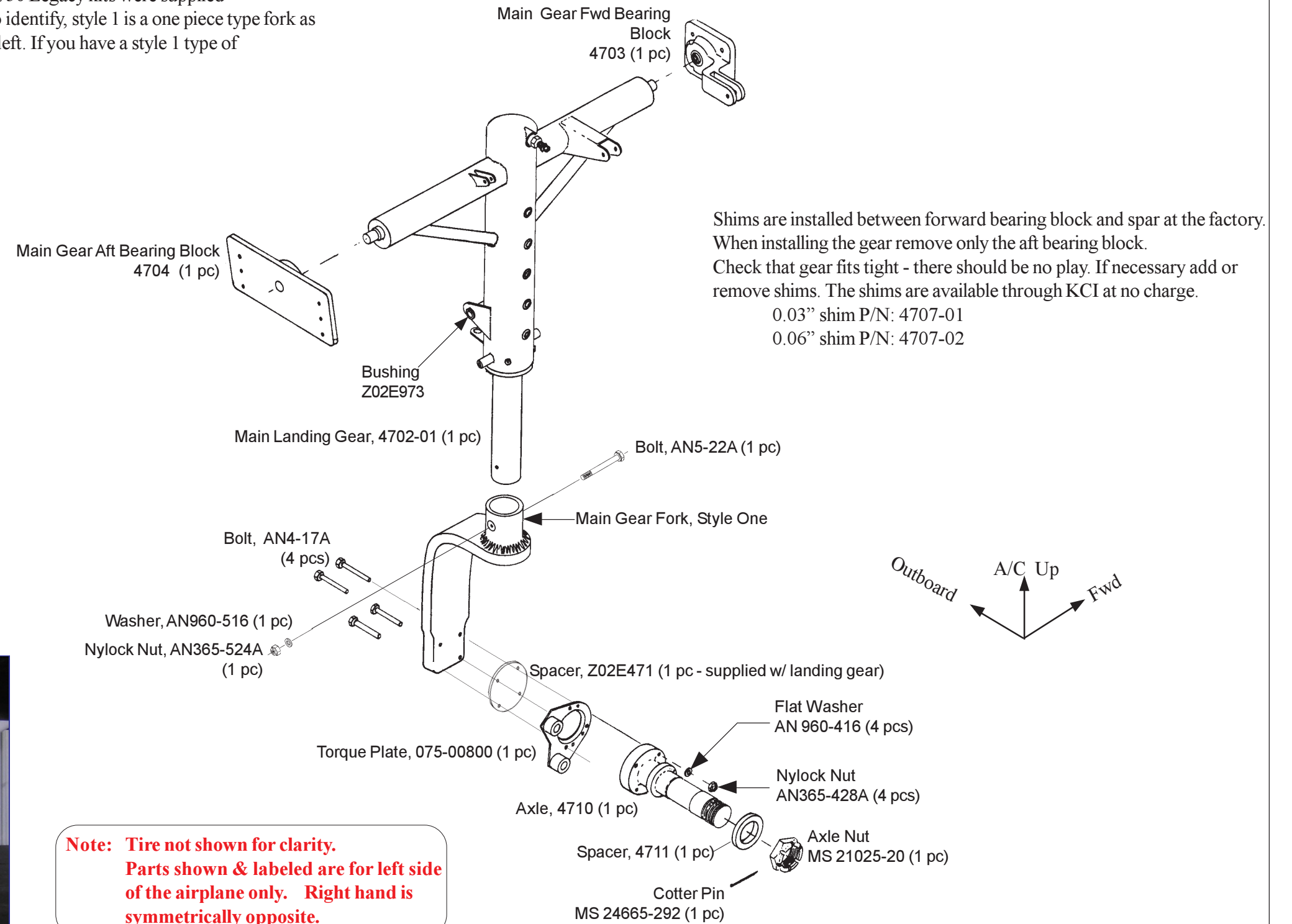
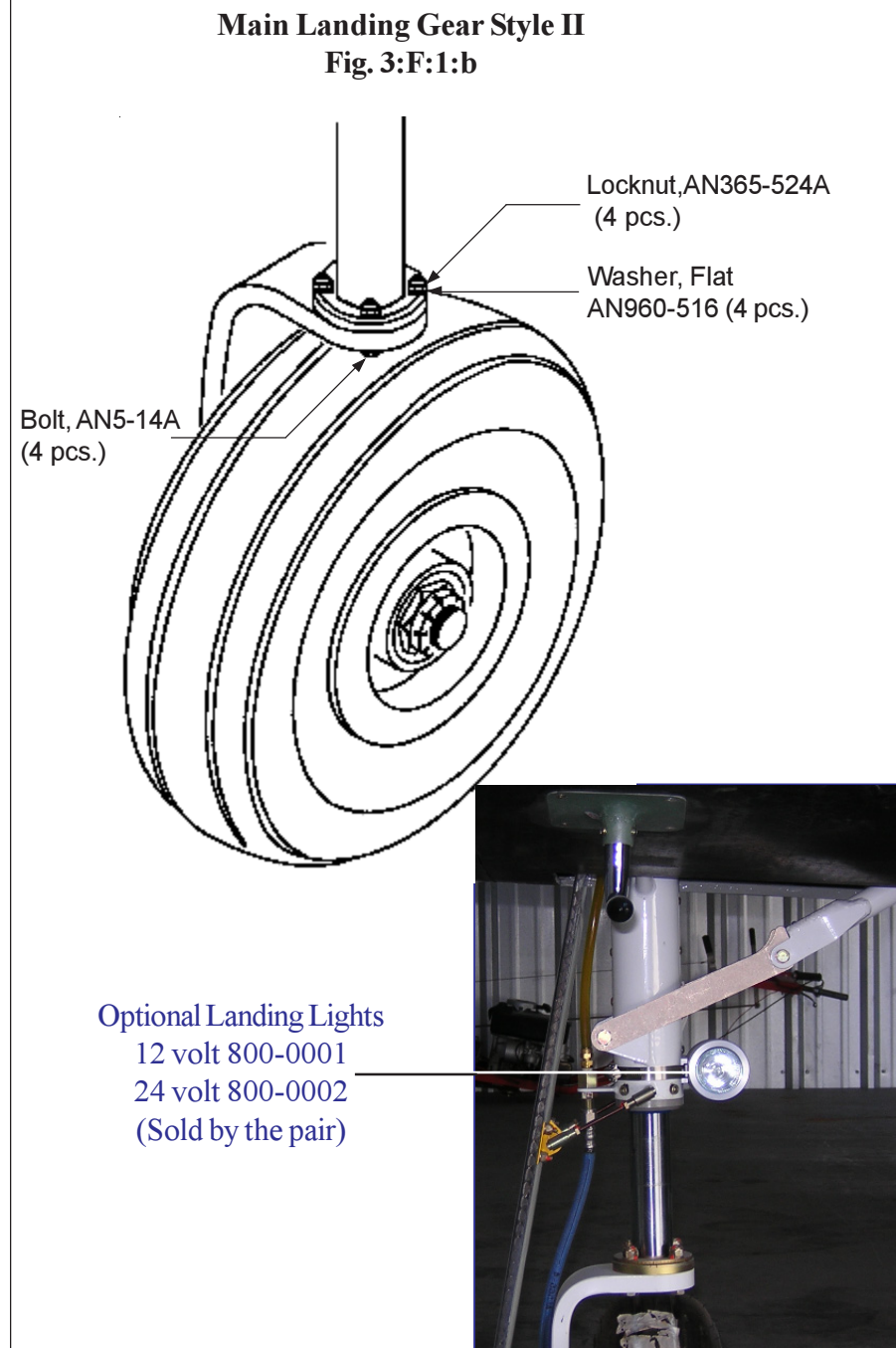
## F. Main Gear Installation

The Legacy landing gear is oleo pneumatic. The landing gear is pre-aligned at the factory however the angle of the gear leg itself must be set as shown later in this section. The first 50 Legacy kits were supplied with a style 1 landing gear and from then on a style 2 landing gear. To identify, style 1 is a one piece type fork as shown and style II has a collar that bolts to the fork as shown on the left. If you have a style 1 type of fork you must comply with service bulletin SB058.

F 1. Assemble the main gear legs as shown.

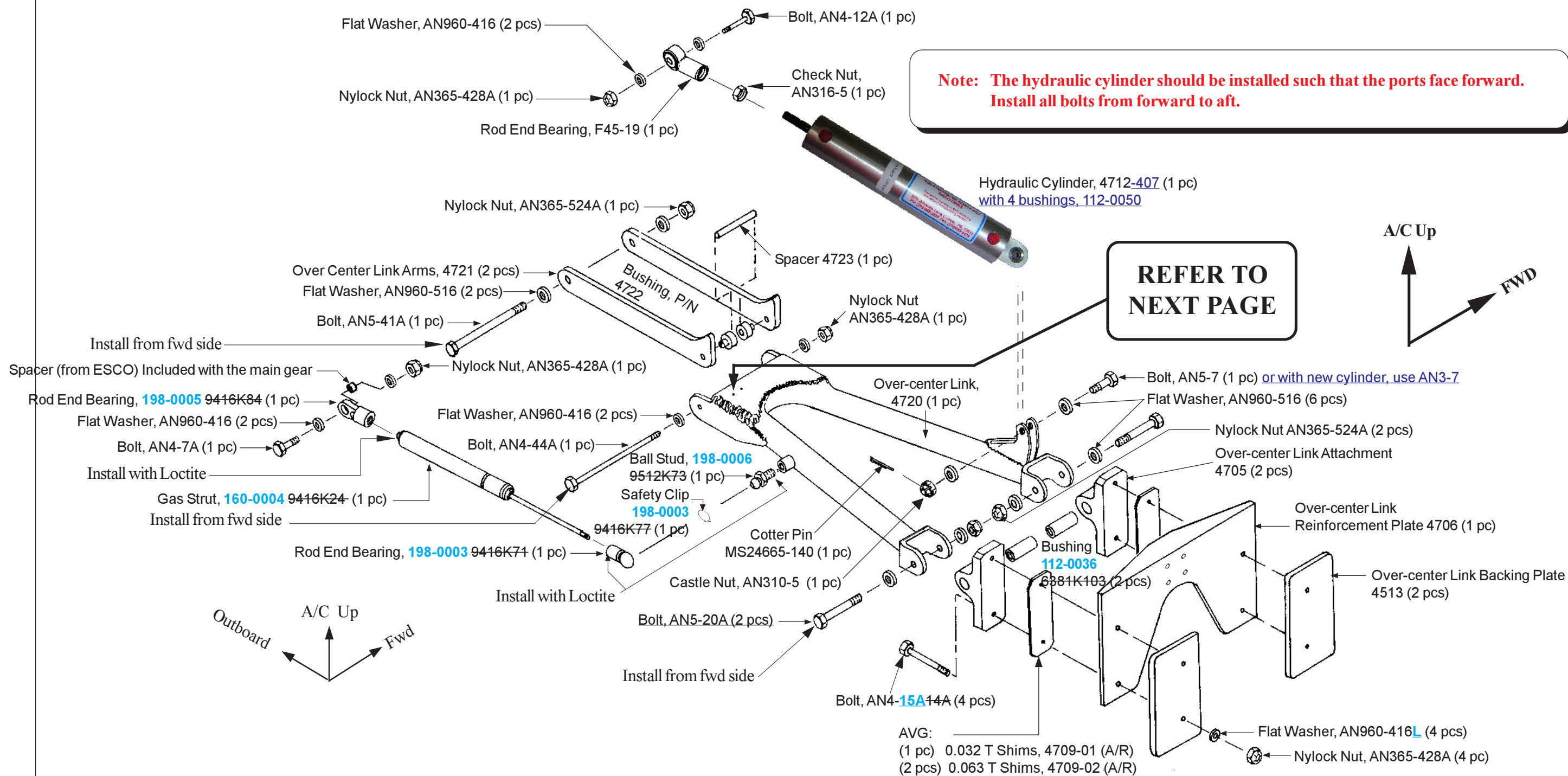
### Main Landing Gear (Exploded View)

Fig. 3:F:1



### Over Center Link Assembly

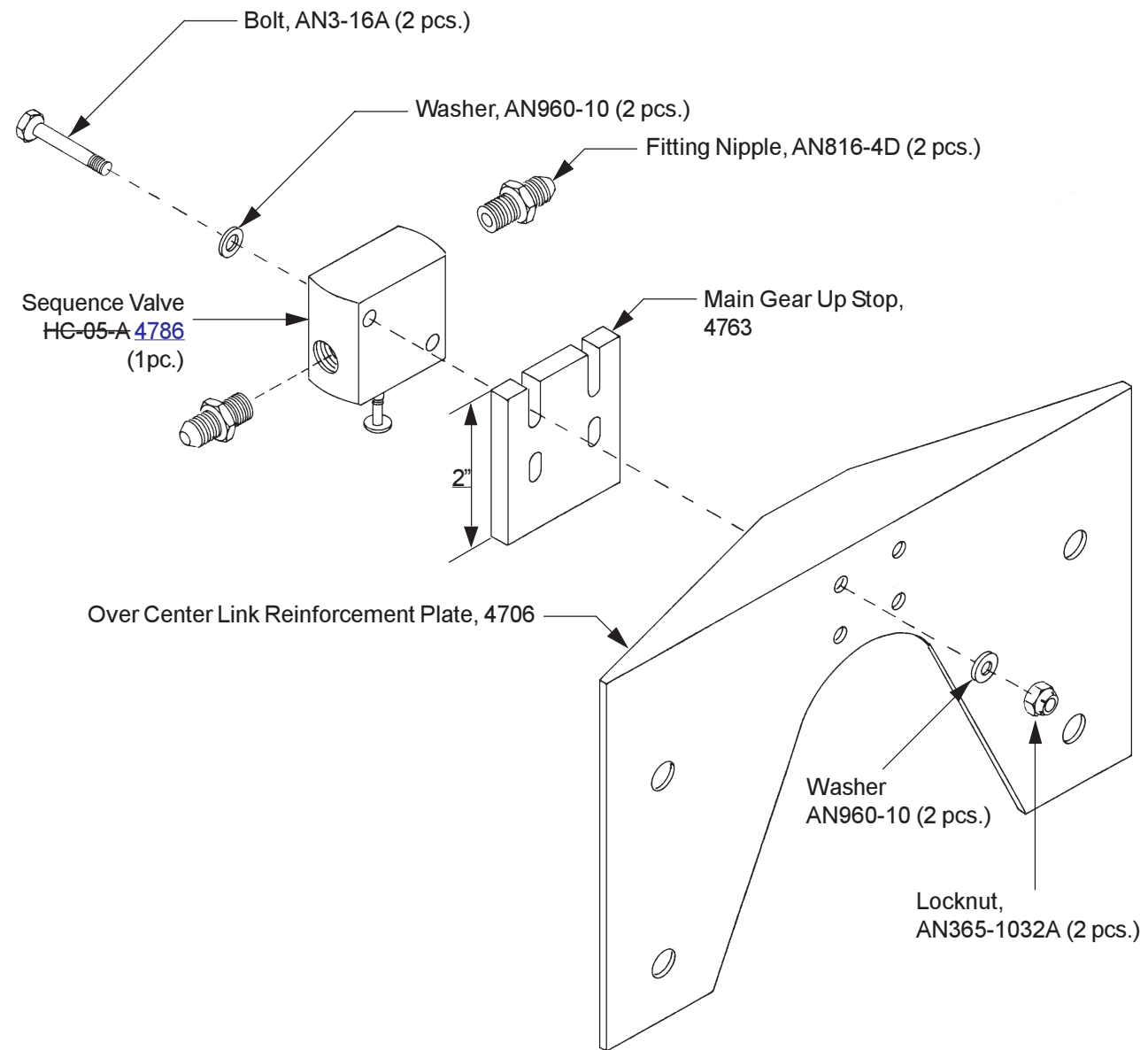
Fig. 3:F:4



**Note** Install the ball stud, part number 198-0006 9512K73 with Loctite 242.



Sequence Valve/Gear Up Stop  
 Fig. 3:F:7



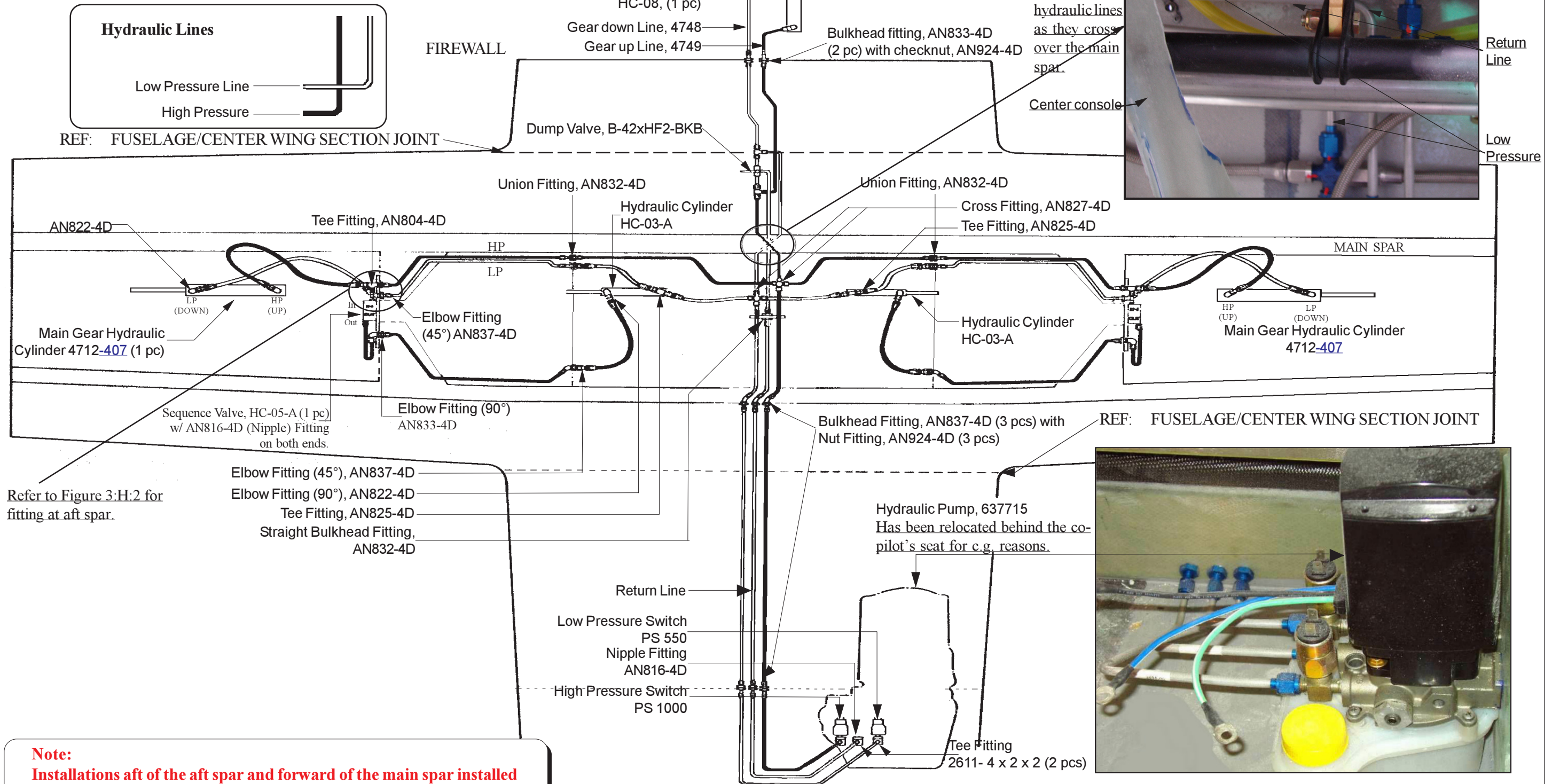
Final adjustment of up stop is explained in chapter 16.

## H. Center Wing Section Hydraulics

To view the schematics of all line layouts, see pages 3-35 through 3-37.

Center Wing Section Hydraulic line Schematic drawing

Refer to this photo to review the shape of the hydraulic lines as they cross over the main spar.



**Note:** Installations aft of the aft spar and forward of the main spar installed in chapter 16. This is a schematic only. Refer to following pages for exact routing.

